



the international two-person
dinghy for young sailors

NOTICE OF RACE

2015 INTERNATIONAL 420 CLASS WORLD CHAMPIONSHIP INTERNATIONAL 420 CLASS LADIES WORLD CHAMPIONSHIP 17-25 JULY 2015

Venue: Saga Prefecture Yacht Harbour, Karatsu, Japan
Organizing Authority: Saga Prefecture Yachting Federation
In Partnership with: Japan Sailing Association, Japan 420 Class Association
and the International 420 Class Association

[DP] denotes a rule for which the penalty is at the discretion of the International Jury.

[SP] denotes a rule for which a standard penalty may be applied by the race committee without a hearing.

1. RULES

- 1.1 The regatta will be governed by the Rules as defined in the Racing Rules of Sailing (RRS).
- 1.2 RRS Appendix P, Special Procedures for Rule 42, will apply.
- 1.3 National flags may be required on mainsails. No other Class Rules change will apply.
- 1.4 No National Authority prescriptions will apply.
- 1.5 If there is a conflict between languages the English text will take precedence.

2. [DP] ADVERTISING AND BOW NUMBER

- 2.1 Boats may be required to display bow numbers and/or advertising chosen and supplied by the Organising Authority.
- 2.2 In accordance with ISAF Regulation 20.4.3, all competitors shall wear bibs while racing. The bibs will be provided by the Organizing Authority.
- 2.3 In accordance with ISAF Regulation 20.4.3, competitors aboard the boats ranking first, second, and third in the series at the beginning of that day shall wear yellow, blue and red bibs respectively while racing. The bibs will be provided by the Organising Authority.

3. EVENTS FORMAT

Each event will consist of a qualifying series and a final series.

- 3.1 Qualifying series – 6 races scheduled for each event, crews will be divided into fleets. The number of fleets will be as defined below:
 - One fleet up to 50 boats,
 - Two fleets from 51 to 100 boats,
 - Three fleets for more than 100 boats.

The numbers of fleets may be changed by the O.A. when the total number of



entries is close to the limits stated in this NoR.

- 3.2 Final series** – 6 races scheduled for each event, crews in the qualifying series will be divided into final fleets according to the final scores of the qualifying series.

There will be the same number of fleets as in the qualifying series.

The fleets will have approximately the same number of crews in each.

The Gold fleet will consist of the first part of the final scores of the qualifying series, Silver fleet of the second part, and so on.

If there are fewer than 50 entries at an event, then the championship will be competed in one fleet (single series) with 12 final races.

4. EVENTS SCHEDULE

Day 1 - 17 th July	Registration and equipment inspections	0900-1900
Day 2 - 18 th July	Registration and equipment inspections	0900-1900
Day 3 - 19 th July	Registration and equipment inspections Practice Race: warning signal Opening Ceremony	0900-1600 1400 1900
Day 4 - 20 th July	Qualifying series	1200
Day 5 - 21 st July	Qualifying series	1200
Day 6 - 22 nd July	Qualifying series	1200
Day 7 - 23 rd July	Qualifying/Final series	1200
Day 8 - 24 th July	Qualifying/Final series	1200
Day 9 - 25 th July	Qualifying/Final series Prize Giving and Closing Ceremony	1200 1800

No warning signal will be given on the last day after 1600.

5. ELIGIBILITY

- 5.1** The championships are only open to International **420** dinghies.
- 5.2** ISAF eligibility according to **ISAF Regulation 19** is required of all athletes.
- 5.3** Each competitor shall be a member of his National Class Association and, if relevant, of his National Authority.
- 5.4** Each competitor shall be entered by his National **420** Class Association or by his Federation/National Authority if such an Association does not exist.

6. ENTRIES AND RESTRICTIONS

6.1 WORLD CHAMPIONSHIP

Entries for the World Championship shall be limited in accordance with the International **420** Class Association Guidelines: **7** boats for each country and **14** boats for the host country in each championship.

Only men or mixed crews are authorised to enter the World Championship.

6.2 LADIES WORLD CHAMPIONSHIP

Entries for the Ladies World Championship shall be limited in accordance with the International 420 Class Association Guidelines: **7** boats for each country and **14** boats for the host country in each championship.

Only ladies crews are authorised to enter the Ladies World Championship.

6.3 U17 WORLD CHAMPIONSHIP

Entries for the U17 World Championship shall be limited in accordance with the International 420 Class Association Guidelines: **6** boats (3 boats men or mixed + 3 boats ladies) for each country and **12** boats (6 boats men or mixed + 6 boats ladies) for the host country.

All entries to U17 World Championship will race in one fleet. If there are less than 30 entries the U17 fleet will be included in the respective Worlds or Ladies Worlds fleet.

7. REGISTRATION

All entries shall be made on-line at the International 420 Class Website www.420sailing.org before **17 June 2015**.

Please ensure that the on-line entry form is printed, the required signatures obtained and the completed form brought to Registration.

Entry fee per boat: **EUR300**

Entry fees shall be paid in EUROS by swift to:

International 420 Class Association

Account No: 210 - 0467 - 180 - 80

BNP Paribas Fortis Nieuwpoort-Centrum, Langestraat 56,
B-8620 Nieuwpoort, BELGIUM

IBAN: BE47 2100 4671 8080

SWIFT CODE: GEBABEBB

Before: **17 June 2015**

ALL BANK TRANSFERS SHOULD BE CLEARLY ANNOTATED WITH THE NAME OF THE COUNTRY, THE EVENT AND THE SAIL NUMBERS AND/OR NAMES OF THE COMPETITORS.

Each entry and fee not received by 17 June 2015 may not be accepted and shall be subject to a supplementary fee of EUR 75.

Entry fees to be paid by coaches, team leaders and representatives from participating nations are **EUR75 per person and will be paid direct to the Organizing Authority at registration.**

8. DISCLAIMER OF LIABILITY

Competitors participate in the regatta entirely at their own risk. See RRS 4, Decision to Race. The Organizing Authority and all parties involved in the regatta organization will not accept any liability for material damage or personal injury or death sustained in conjunction with or prior to, during, or after the regatta.

9. EQUIPMENT INSPECTION - CERTIFICATES

All boats shall be inspected before racing in the days specified in this Notice of Race. A boat will be eligible to compete and complete event registration after Equipment Inspection has been completed.

Each boat shall have a valid Measurement certificate, accompanied by the hull measurement form (IMF), both of which must be presented during the pre-race inspection. Only original or certified true copies of these documents shall be accepted. Event charter boats are excluded from this obligation, but they must be accompanied by original or certified true copies of their measurement form.

Sails shall be certified and marked by an official measurer before being present for inspection. No sail shall be accepted for inspection if it is not certified according to the class rules, and no member of the equipment inspection team shall certify sails on the spot.

Random checks may be made at any time during the Championships

10. SAILING INSTRUCTIONS and EQUIPMENT INSPECTION INSTRUCTIONS

The Sailing instructions will be available at the race office for each competitor and Team Leader after the final country's registration has been completed. The Equipment Inspection Instructions will be available for each competitor and Team Leader at the race office at registration.

11. LADIES CREWS IDENTIFICATION

Mainsails used in the Ladies World Championship shall carry a red rhombus (length of diagonals minimum 250mm) above the top batten pocket on both sides. The position should be approximately in the centre of the triangle formed by the top batten and the mainsail head.

12. [NP] SAFETY REGULATIONS

Competitors shall wear a life-jacket or other adequate personal buoyancy at all time when afloat (See Class rule C.3).

Wetsuits and drysuits do not constitute adequate personal buoyancy.

13. COURSES

The courses will be trapezoid.

The target time of a race will be 45 minutes.

14. JURY, PROTESTS and PENALTIES FOR BREAKING RULES OF PART 2

An International Jury will be appointed in accordance to **RRS 91(b)**. Its decisions will be final as provided in **RRS 70.5**.

15. SCORING

15.1 RRS Appendix A will apply.

15.2 Qualifying series:

All 6 qualifying races must be completed to constitute the qualifying series.

The Championships will be valid if, at least, the qualifying series are completed.

All race scores from the qualifying series will be carried forward to the final series.

15.3 Final series

There will be 6 races in the final series.

15.4 Single series

There will be 12 final races in the single series.

15.5 Discards

- When fewer than 5 races have been completed, a boat's series score is the total of her race scores,

- When 5 or more races have been completed, a boat's series score is the total of her race scores excluding her worst score,

No more than **three** races can be competed each day.

16. PRIZES

The first **three** crews in each fleet shall be given a trophy.

The first **three** World crews in the **gold fleet** shall receive a **Gold, Silver** and **Bronze** medal.

The first **three** Ladies World crews in the **gold fleet** shall receive a **Gold, Silver** and **Bronze** medal.

The first **three** U17 World crews shall receive a **Gold, Silver** and **Bronze** medal.

The first **Junior** crew shall receive a medal and the John Merricks Trophy (helm and crew shall both be aged 18 or under).

The first **Junior** Ladies crew shall receive a medal and the John Merricks Trophy (helm and crew shall both be aged 18 or under).

World Championship International 420 Class Challenge Cup - this trophy will be awarded to the gold medallists in the World Championship fleet.

International 420 Class Ladies World Championship Challenge Cup - this trophy will be awarded to the gold medallists in the Ladies World Championship fleet.

Huck Scott Memorial Trophy - this trophy is awarded to the youngest boat crew competing in the championship, in either the Open or the Ladies. The lowest combined age (helm and crew) at the end of the year will be used.

William Sanchez Trophies (2) - these trophies are awarded to the highest placed boat, both aged 16 or under, at the end of the year, one for the World fleet and one for the Ladies fleet.

Francis Mouvet Trophy - This trophy will be awarded to the nation who has the highest placed 3 boats in the World Championship using both the World and Ladies fleets.

The prizes are given to both members of a crew.

17. TITLES

The title of **International 420 Class World Champion** will be awarded to the first team in the ranking list of the World Championship.

The title of **International 420 Class Ladies World Champion** will be awarded to the first team in the ranking list of the Ladies World Championship.

The title of **International 420 Class U17 World Champion** will be awarded to the first team in the ranking list of the U17 World Championship.

The title of **International 420 Class Junior** will be awarded to the first junior team in the ranking list of the World Championship.

The title of **International 420 Class Junior Ladies** will be awarded to the first junior ladies team in the ranking list of the Ladies World Championship.

A junior team is defined as a crew who shall not have attained is or her 19th birthday on or before 31.12.2015 (i.e. born after 31st. December 1996) for both members of the crew.

U17 team is defined as a crew who shall not have attained his or her 17th birthday on or before 31.12.2015 (i.e. born after 31st. December 1998) for both members of the crew.

18. COACH BOAT AND SUPPORT PERSONAL

All coach and support boats shall display the 3 letter national code of their ISAF Member National Authority at all times while afloat clearly visible from both sides of the boat and the number code of the organizing authority. The minimum height for the letters shall be 200 mm.

All registered support boats shall act as rescue boats in case of need (more details in Sailing Instructions).

All support boats shall have third party liability insurance with a minimum cover of **EUR1,000,000** per event or equivalent. A certificate of such insurance shall be shown during registration.

19. INSURANCE

Each competitor shall produce at registration an evidence of valid third party insurance with a minimum cover of **EUR1,000,000** or the equivalent in other currencies.

Each participant warrants the suitability of his or her boat for the event.

20. RIGHTS TO USE NAMES and LIKENESSES

By participating in the regatta competitors automatically grant to the International 420 Class Association and to the Organizing Authority and their sponsors, the right in perpetuity to make, use and show, from time to time at their discretion, any motion pictures and live, taped or filmed television and other reproductions of the athlete during the period of the competition without compensation.

21. [DP] CAMERAS AND ELECTRONIC EQUIPMENT

Boats may be required to carry cameras, sound equipment or positioning equipment as specified by the Organizing Authority.

=====

GENERAL INFORMATION (not part of Notice of Race)

About the Club/Venue:

Location details: 3-1-8 Futago, Karatsu-City, Saga Prefecture, Japan
Venue Opening: 0830-2000 hours
Web: www.sagaken-sports.com/institution/sailboat.html
Email: info420@karatsu-worlds.com

Social activities:

19 July 20:00-21:00 Castle Bay fire work show
22 July after race Mid-week party
25 July after prize giving Traditional Summer Evening festival

Support Boats:

Bringing your coach boat into Japan will be very difficult. You need to register your boat under the Japanese registration system which is very complicated and expensive/time consuming.

We will arrange sufficient number of reasonably priced coach boats. Do not even consider bringing your coach boat into Japan. If you would like to charter a coach boat, please inform your interest to the-mail: castlebaycoachboat@gmail.com

Spectator boats will be available with daily booking and press boats for Media.

420 Charter Boats:

1. New boat (without sails) including insurance (maximum of 70boats):

1,200EURO by Nautivela available from 14-25 July 2015 or

1,400 EURO by Nautivela available from 10-25 July 2015.

Please complete the application form in Appendix B of this Notice of Race and email to: info@nautivela.com

2. Used boat (maximum of 20boats): **500 EURO** per regatta. Please contact: info420@karatsu-worlds.com

Each National Class Association is entitled to reserve 10 charter boats which should be done by 1 April 2015. At the time of reservation National Class Associations can indicate any additional charter boats they require. By 10 April 2015 the allocation of charter boats will be confirmed.

Shipping

The closest shipping port for those bringing their own 420s is Hakata Port. As a timeframe guide, the transit period from Hakata Port to the venue will normally take one week. The Organizing Committee recommends that you use a "carnet de passage" system.

Accommodation and Travel:

There are a couple of big hotels and many smaller inexpensive hotels. Japanese style inns are also available, which can be different from your life style but at these will enjoy the great hospitality of our country. There are a wide variety of the local delicacies, including pure white squid, Saga beef, sashimi, sushi, boiled foods, and soups.

<http://www.karatsu-yado.com/english/index.html>

<http://2015-420-castlebay.karatsu-worlds.com/information/accommodation>

For further booking accommodation inquires please contact:

info420@karatsu-worlds.com



How to get to Karatsu

Karatsu City is located approx. 50km southwest of Fukuoka International/Domestic Airport. Fukuoka Airport is linked with other main international airports in Japan such as Tokyo (Narita or Haneda), Osaka, Nagoya, etc. There is a direct KLM flight from Amsterdam. Public trains and buses from the airport are also available to Karatsu City Centre. The nearest port is located in Fukuoka (Hakata Port) which is about an hour by car.

<http://2015-420-castlebay.karatsu-worlds.com/information/venue>

Weather and Current

Weather conditions in July:

8-18knots

Average Temperature:

27-33 degrees Celsius

<http://www.windfinder.com/forecast/karatsu>

Current/Tide:

Tide height difference will be 1.5 - 3m, up to 0.5knot

<http://www.tide-forecast.com/locations/Karatsu-Saga-Japan/tides/latest>

Other information:

Container storage:

In the car park located 200m from the Marina.

Training before the event in Karatsu

25-26 December 2014 Training Camp

27-29 December 2014 All Japan Championship

2-5 April 2015 Coaching clinic run by International 420 Class Association

3-6 May 2015 Japan Youth Sailing Championship

11-12 July 2015 Pre-Worlds

Safety plan for sailors in case of difficult weather conditions and emergency

There are a large number of rescue boats and an ambulance station is located 3 minutes from the harbour.

Insurance

The Organizing Authority can provide insurance.

Sail Repair Service

North Sails Japan will provide an on-site sail repair service.

Sightseeing

Karatsu City is located in Saga Prefecture on the island of Kyushu, surrounded by Genkai-sea and mountains.

Karatsu is full of history, beautiful nature, fresh seafood, magnificent festivals and lots more is on offer to visitors.

It is just 90 minutes from Fukuoka airport by train.

We are waiting for you to visit.

Come and discover it for yourself.

<http://2015-420-castlebay.karatsu-worlds.com/information/karatsu-tourism>

<http://fukuoka-now.com/areaguide/karatsu-getaway/>

Free Bicycle Rental

Bicycle will be the best transport in Karatsu, as the area is mostly flat. There will be a limited number (approximately 80) of bicycles which will be available on site. Please register your interest by e-mail so that we can arrange sufficient bicycles. The bicycles will be “Free” but you will need to pay for insurance (approximately 1.000 Yen / 10 dollars).

info420@karatsu-worlds.com

Please note that you drive on the left side of the road in Japan

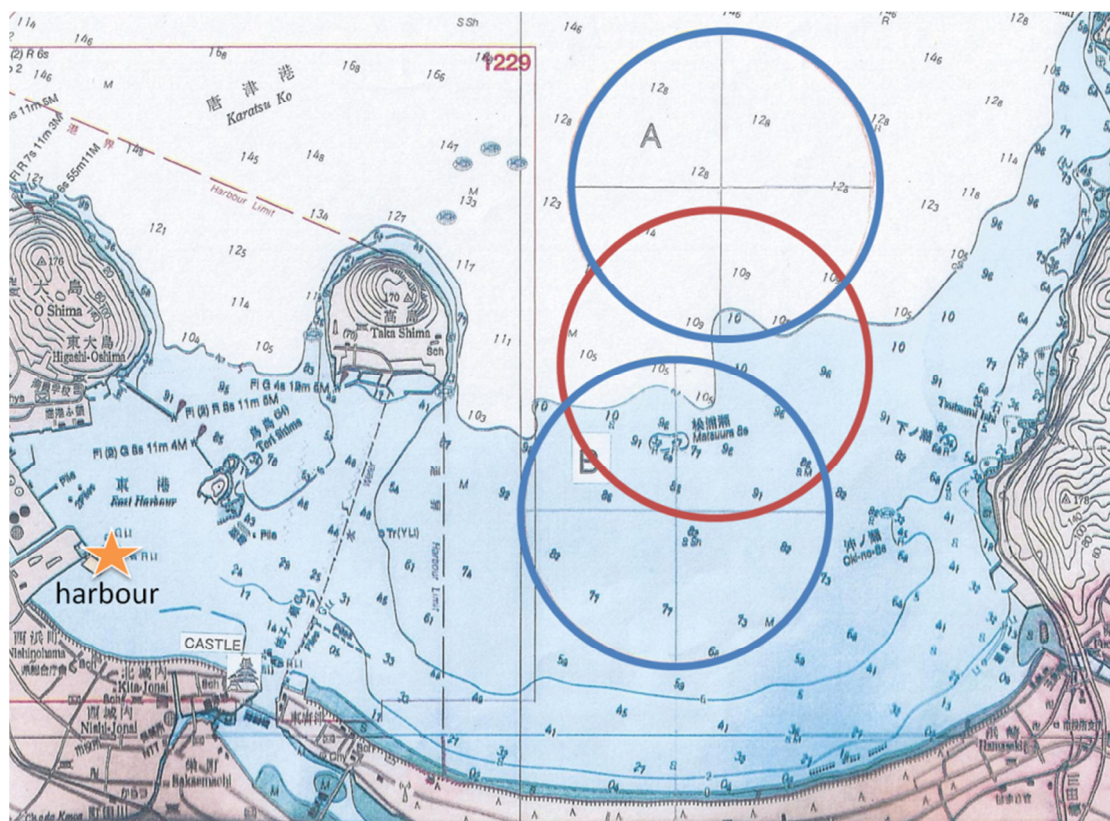
APPENDIX A - RACING AREA

The Saga Prefecture Yacht Harbour is located at N33.4605, E129.967747.

There are two patterns for racing areas:

If single race area is required the area marked with red circle will be used. The centre of the red circle is N33.4752, E130.013. When two race areas is required blue marked areas will be used.

RACING AREA





NAUTIVELA 420 Charter Form 2015 420 World Championship – Karatsu, Japan 17-25 July 2015

Prices are: EURO €

1. Complete 420(NO sails) for the 420 World Championship 2015

from 14/07/2015 until 25/07/2015

Boat supplied ready to sail including trolley, top cover, including insurance* 1.200,00

2. Complete 420(NO sails) for the 420 World Championship and PRE WORLDS 2015

from 10/07/2015 until 25/07/2015

Boat supplied ready to sail including trolley, top cover, including insurance* 1.400,00

The charges above do not cover damage to the boats and equipment for any un-proper use or loss. Boats shall be handed back after the last race, when an inspection will be made and a form signed by both the sailor and Nautivela to agree any damage or missing part.

To cover this cost, we require a € 300 per boat damage waiver deposit at the time of collecting the boat. Assuming the boat is returned completely undamaged this amount is fully refundable.

Entry to the events is not included.

* Insurance

The comprehensive insurance including third party liability risks is mandatory to register at the events.

Boat insurance covers third party liability of up to € 1.550.000,00

Damage during races to other boats and also to the boat you are using will be paid by the insurance with a deductible of the 20% of the value of the damage.

A € 200 policy excess must be paid for any claim. You will be liable for this payment. Part of the €300 damage waiver will be used to cover the policy excess if required.

We ask that you provide credit card details which can be used in the event of any uninsured damage and multiple claims.

Dates

- Closing date for reservations at special price is 1st April 2015.
- Payment of the 75% of the charter fee to be sent by the 1st April 2015
- Payment of the balance of the 25% of the charter fee to be sent by the 1st June 2015

Payment to be made by bank transfer to the following bank account:

CreditoValtellinese – Ag. 2 – Milano – IBAN: IT18Q0351201603000000066476 – Swift Code/ BIC Code : BPCVIT2S

- **Boats will be allocated on a first come first served basis.** You can send a booking request to enter in the list of charter boats requests. Booking will be final only on receipt of the full payment of the charter fee
- **The first 10 boats requested by a National Class Association (NCA) will be reserved, but any request from the same NCA for more than 10 boats will be put on a waiting list.**
- Between 1 and 10 April 2015 boats that are still available will be reallocated to the NCA that have requested them on the basis of the date of receipt of the original application form.

CHARTER BOAT APPLICATION FORM

Please note that only one application per National Class Association will be accepted. Only a person authorized by the National Class Association may submit this form.

Family Name: First name:

Role in National Class Association:

Address:

Telephone: Email:

Credit card number:

Card valid from: Card expiry date: Security code: Issue no:

I require n° ☐ 420 without sails for: 420 World Championship 2015 ☐ 420 World Championship and Pre Worlds 2015 ☐

Signed:

Date:

Please return to: **Nautivela s.r.l. – piazza Misurina 1 – 20098 San Giuliano Milanese (Milano) – Italy**

Telephone: +39 02 9880212

Fax: +39 02 98287959

E mail info@nautivela.com

